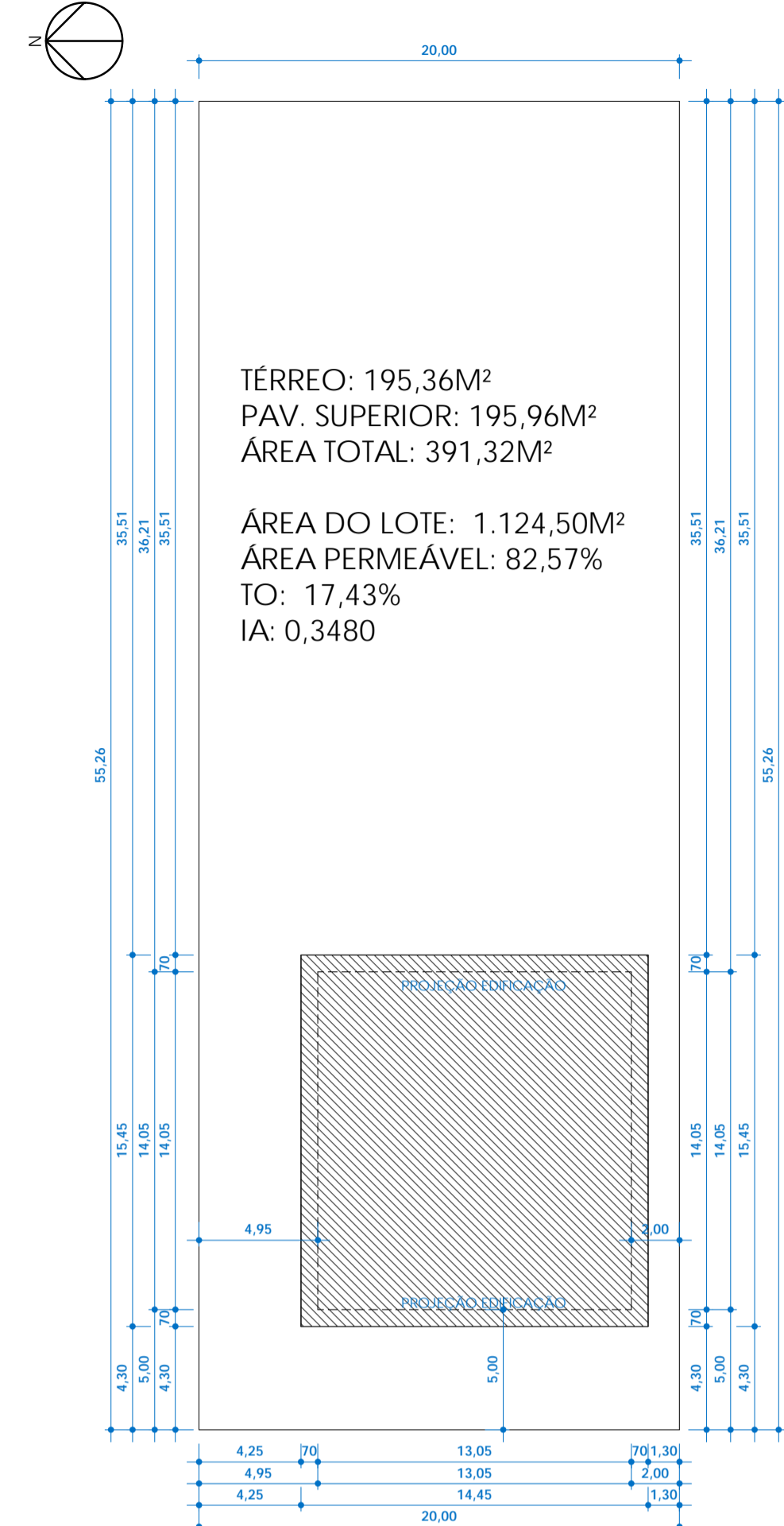
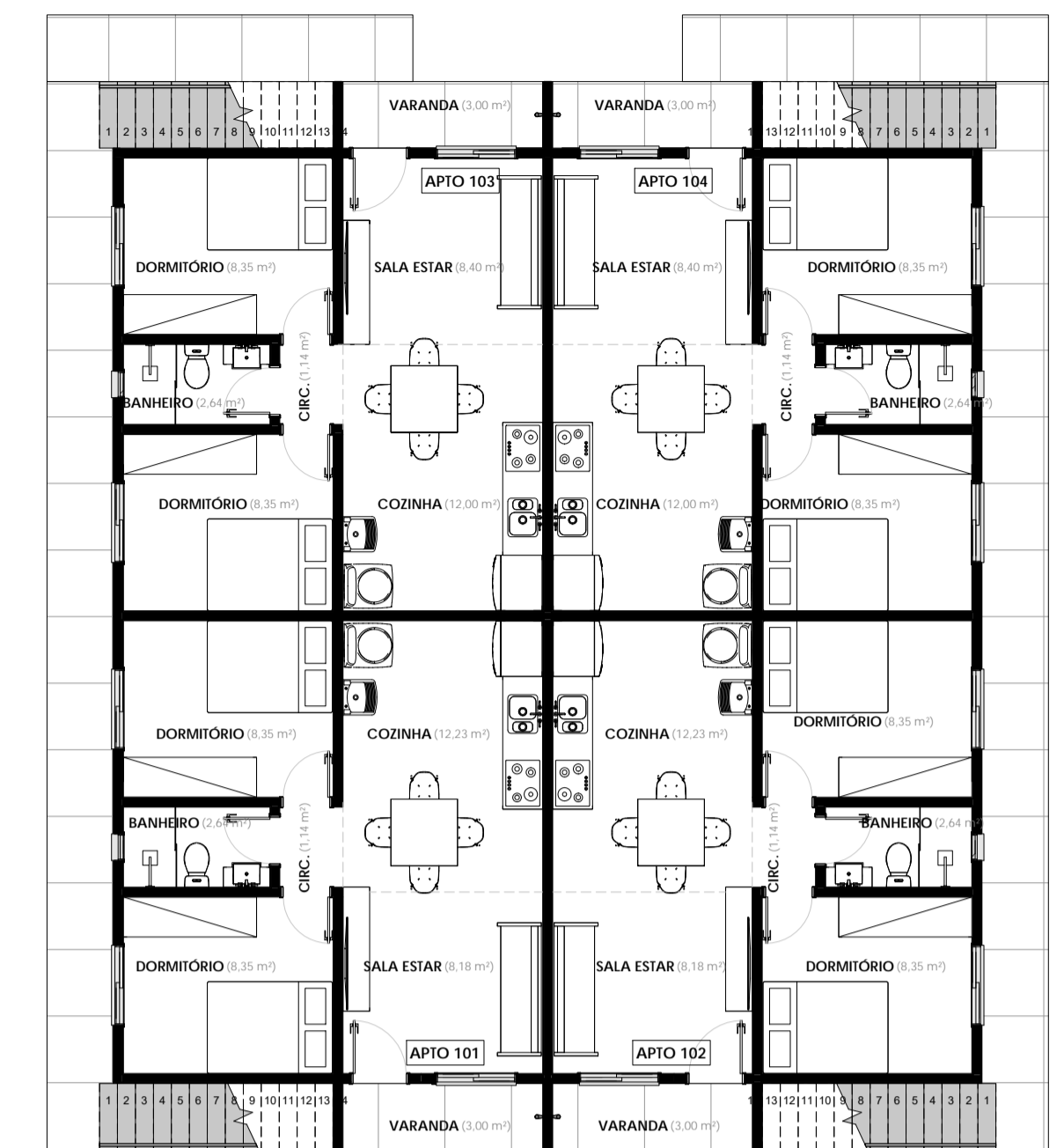


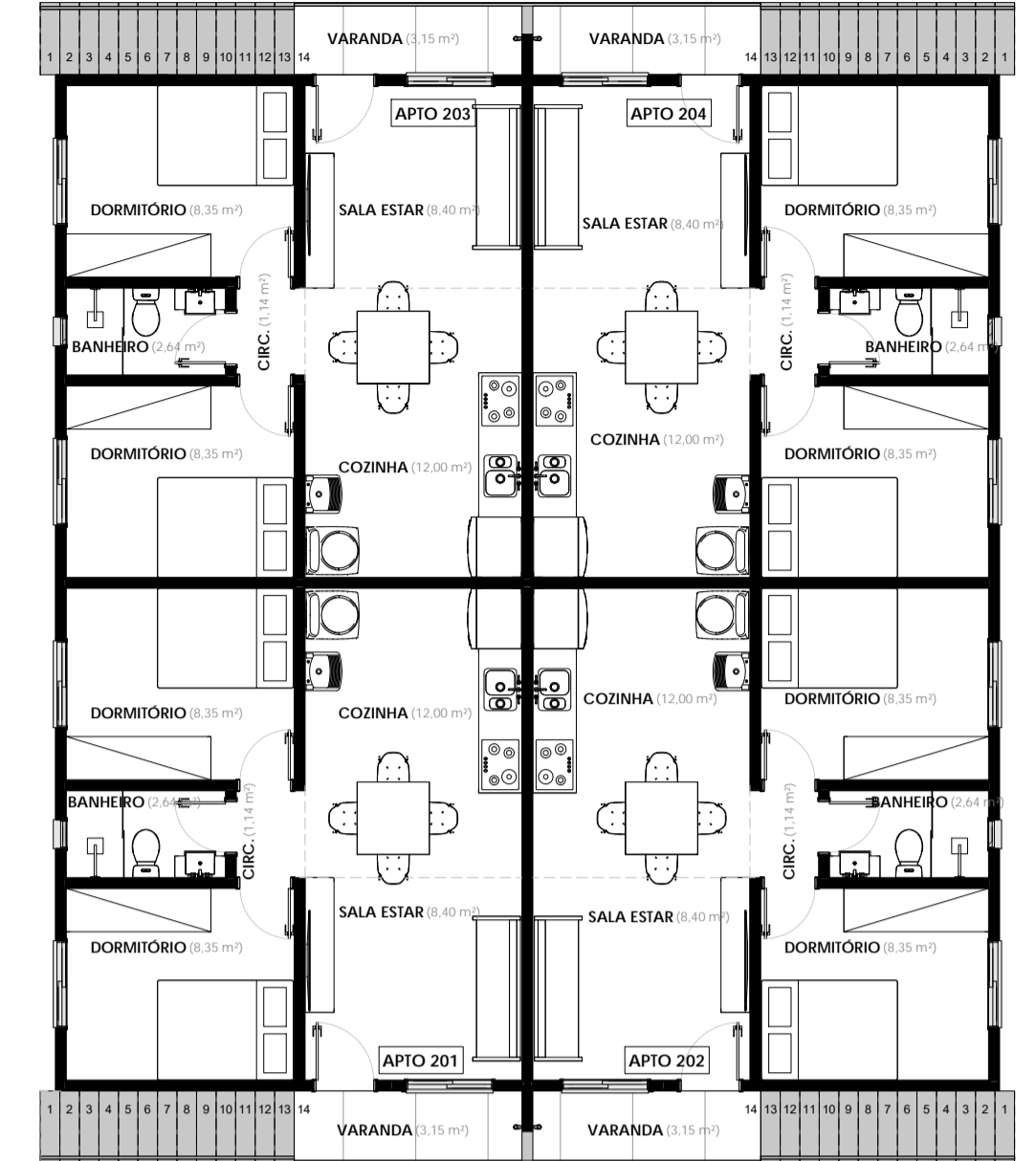
PLANTA DE SITUAÇÃO
ESC: 1 : 500



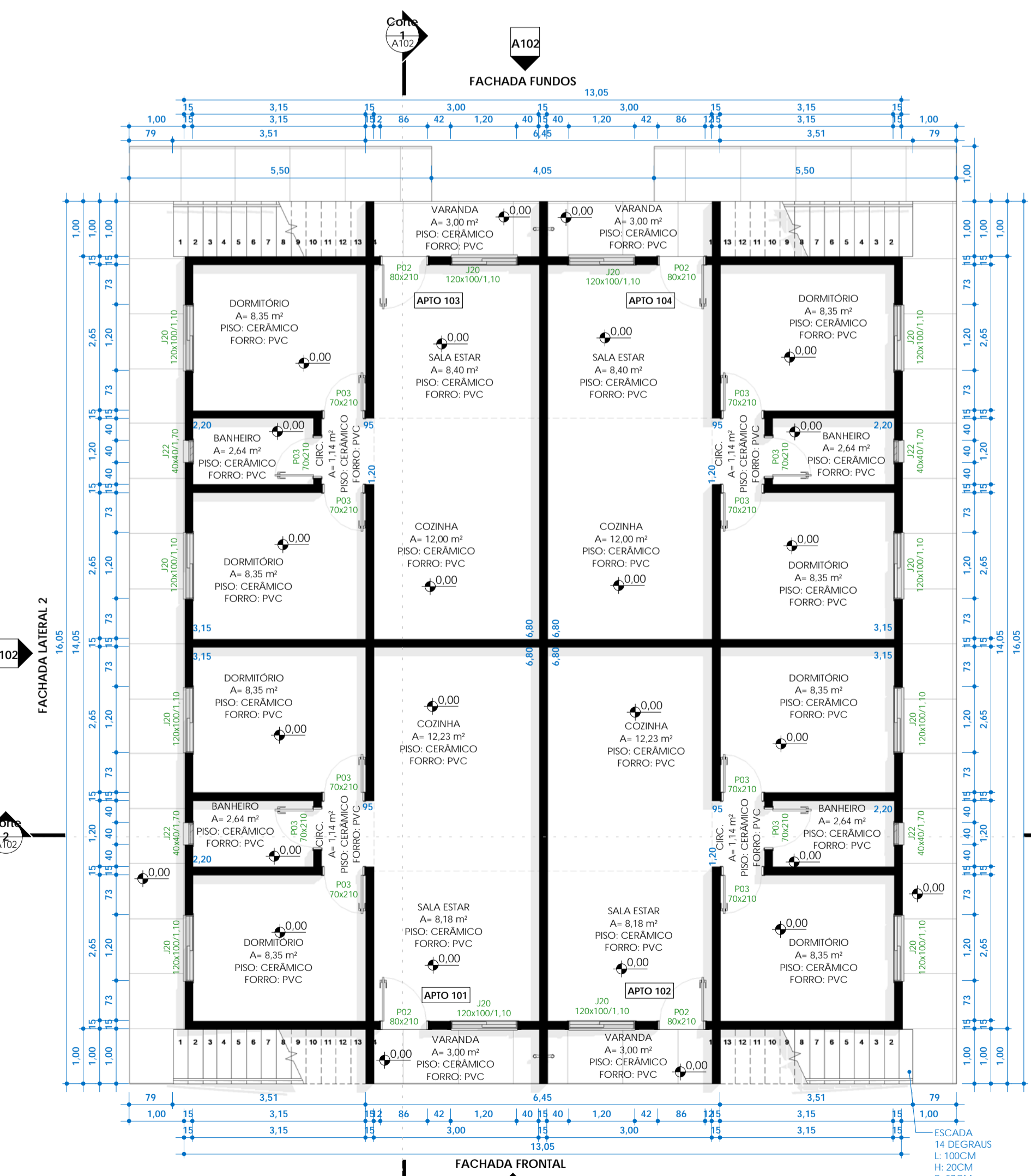
PLANTA DE LOCALIZAÇÃO
ESC: 1 : 250



PLANTA BAIXA TÉRREO MOBILIÁRIO
ESC: 1 : 100

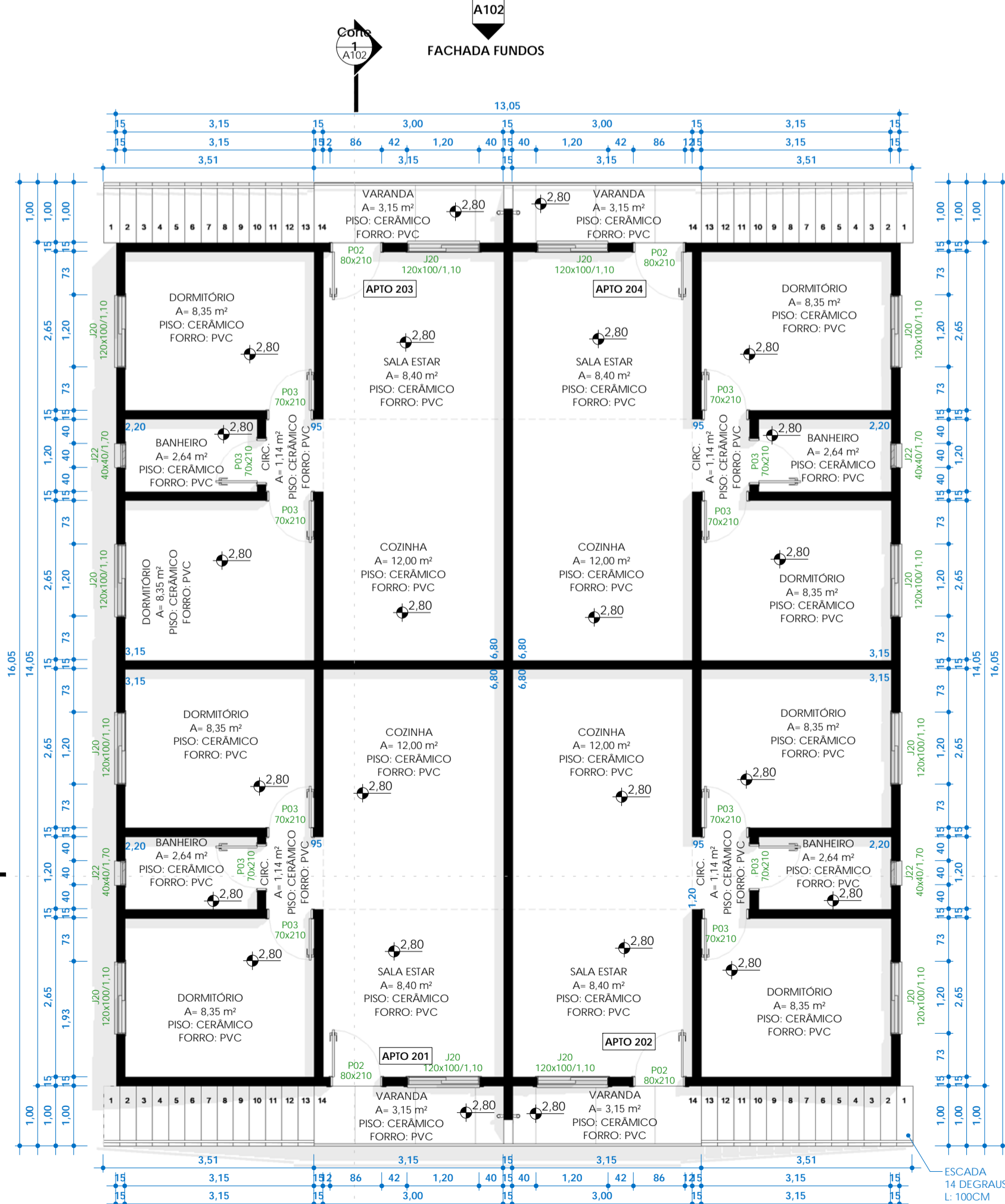


PLANTA BAIXA SUPERIOR MOBILIÁRIO
ESC: 1 : 100

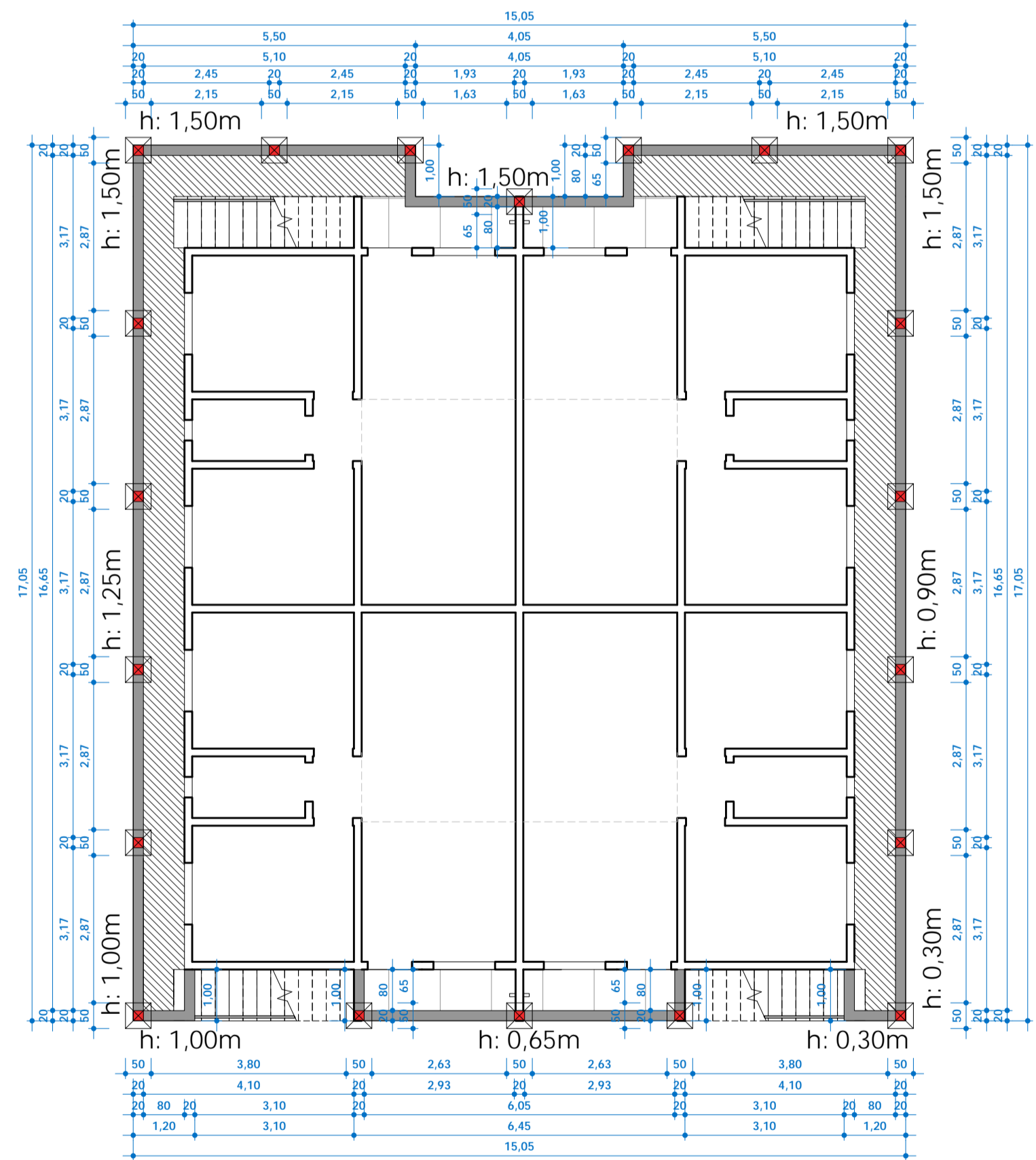


PLANTA BAIXA TÉRREO
ESC: 1 : 75

ÁREAS
TÉRREO: 4 APTOS DE 48,84M² cada
TOTAL TÉRREO: 195,36M²
PAV. SUPERIOR: 4 APTOS DE 48,99M²
TOTAL PAV. SUPERIOR: 195,96M²
TOTAL EDIFICAÇÃO: 391,32M²



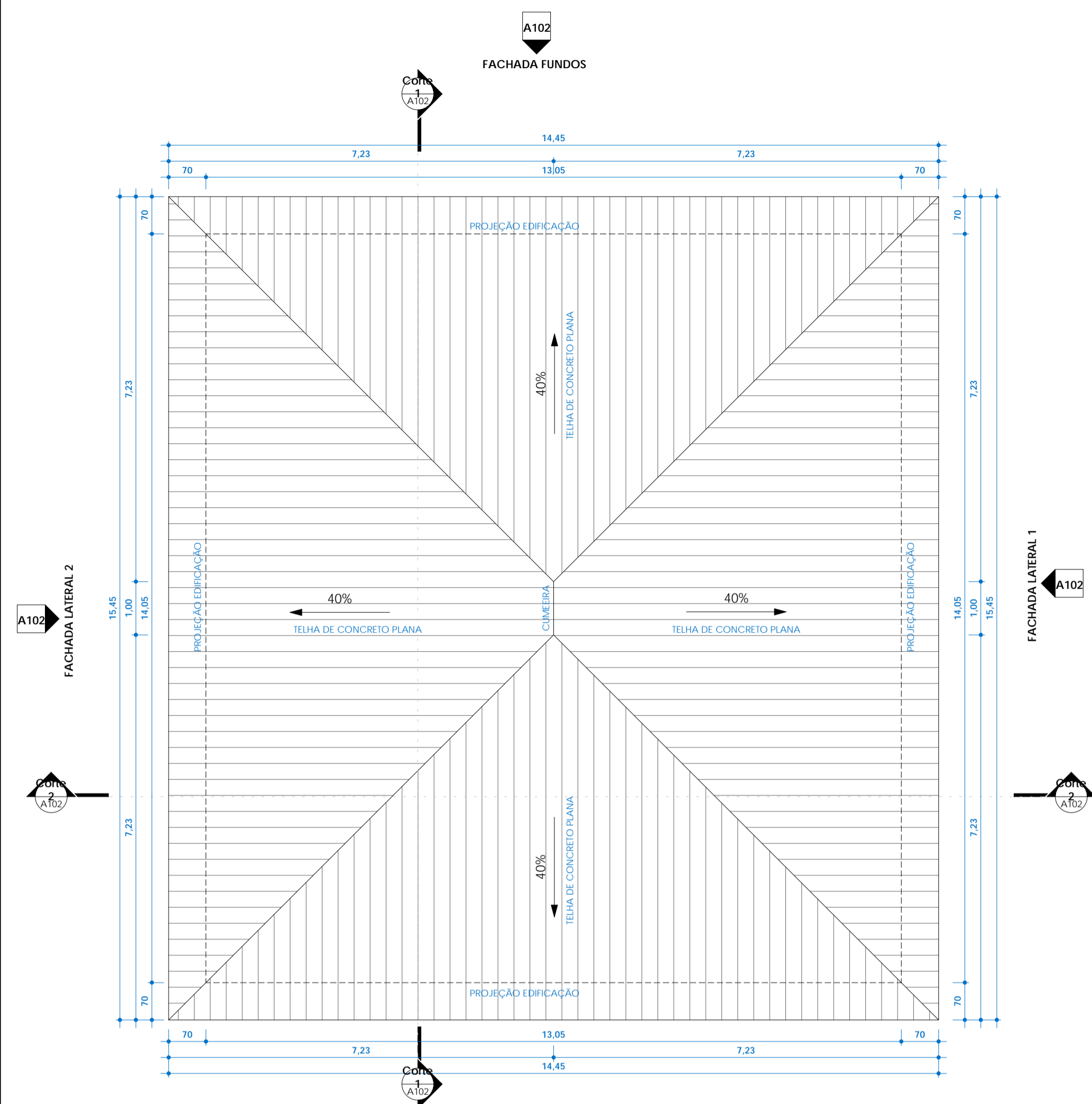
PLANTA BAIXA SUPERIOR
ESC: 1 : 75



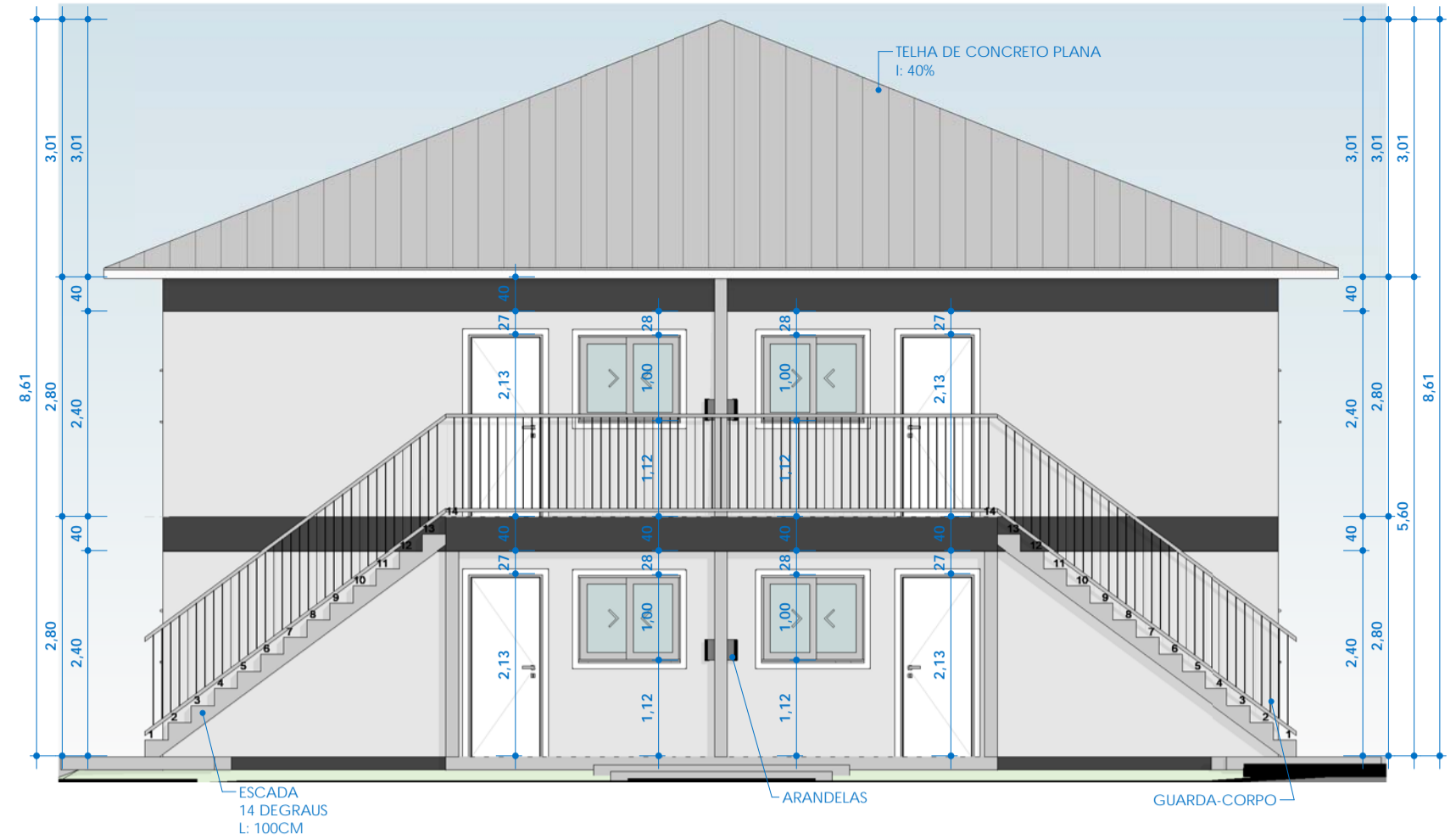
PLANTA TÉRREO ALICERCE
ESC: 1 : 100

LEGENDA ALICERCE:
■ PILARES 20X20CM
■ ALICERCE E VIGAS 20X20CM
h : ALTURA ALICERCES
■ PAVES
■ SAPATAS 50X50CM

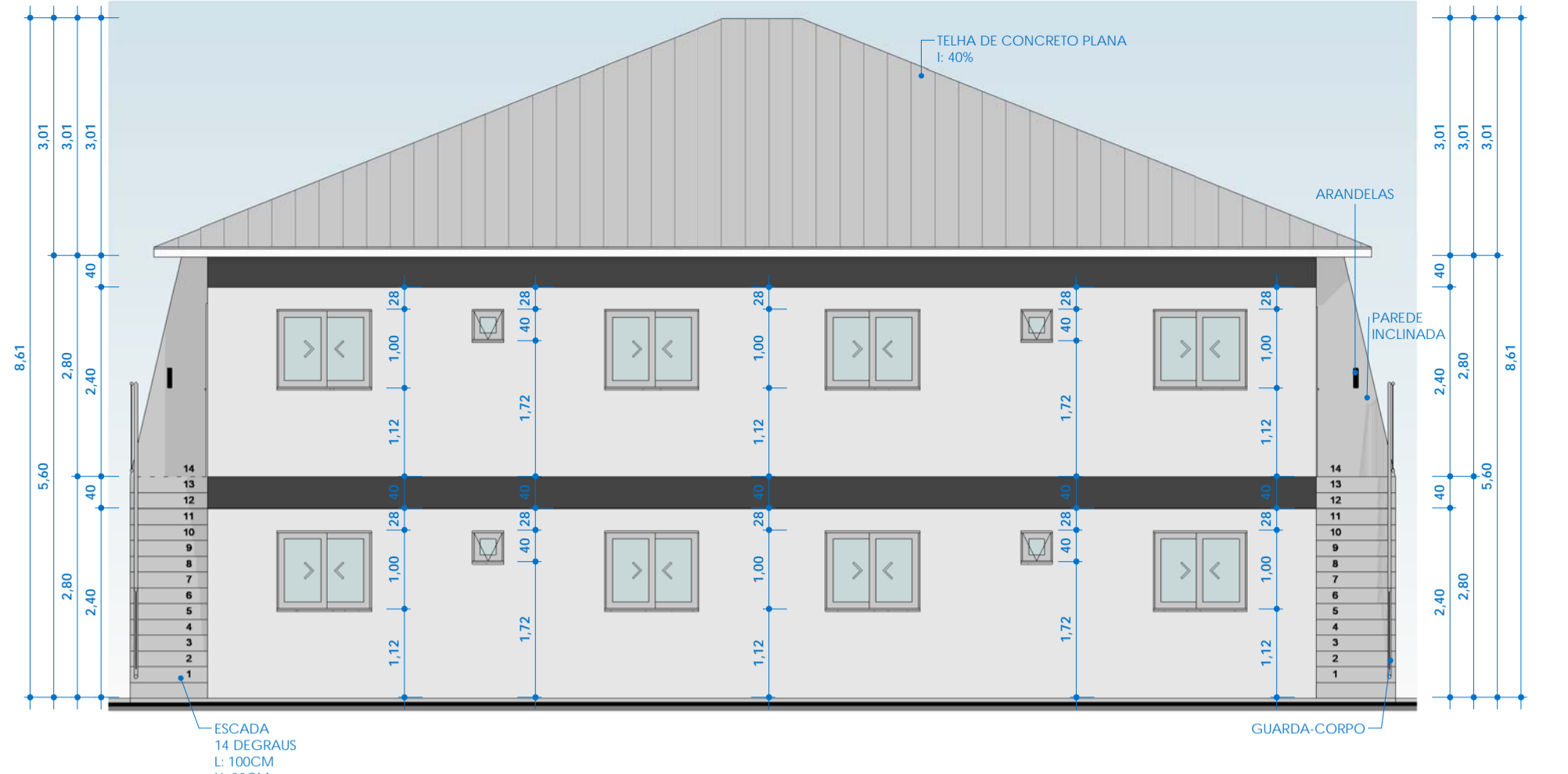
<p>Nome: CONJUNTO HABITACIONAL</p>		<p>Rua Frontal: RUA DA PALMEIRA</p>
<p>Responsável Técnico: FRANCIS CAMPAGNOLO Engenheiro Civil - CREA/RS 236.817</p>	<p>Proprietário(a): BRUNO CAVALHEIRO Engenheiro Civil - CREA/RS 236.820</p>	<p>Lote: 03-A / QUADRA 50</p> <p>Matricula: 11.746</p> <p>Zona: URBANA</p> <p>Local: CERRO GRANDE - RS</p>
<p>Projeta/Desenhista: STEFANI MARCOTTI Arquiteta e Urbanista - CAU-RS A271310-1</p>	<p>Escala: INDICADA</p> <p>Data: JUNHO/2024</p>	<p>Nesta prancha: PLANTAS DE SITUAÇÃO, LOCALIZAÇÃO, TÉRREO MOBILIÁRIO, SUPERIOR MOBILIÁRIO, TÉRREO, SUPERIOR, ALICERCES</p>
<p>PREFEITURA MUNICIPAL DE CERRO GRANDE</p>		<p>Prancha: A101</p>



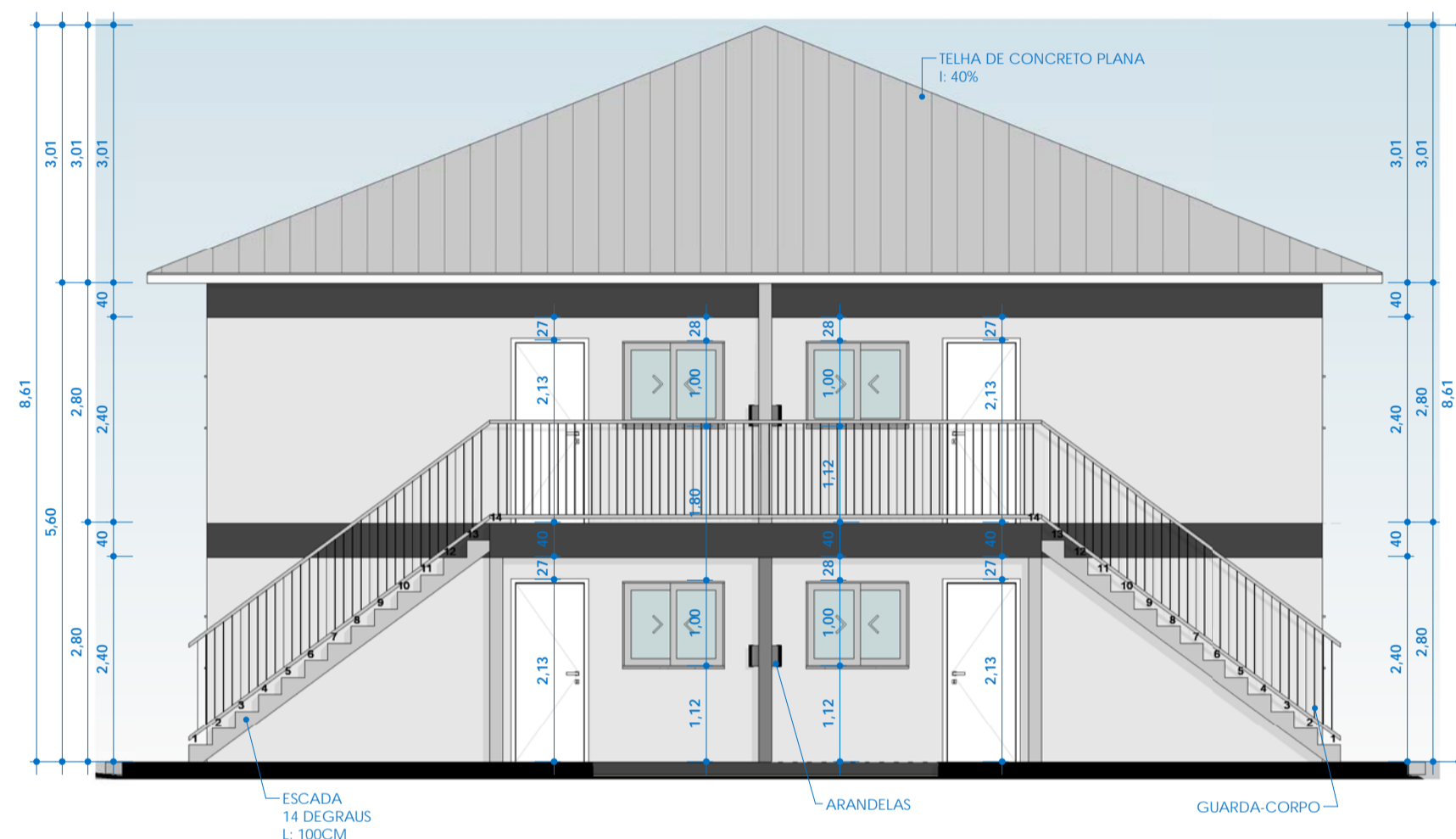
PLANTA DE COBERTURA
ESC:1 : 75



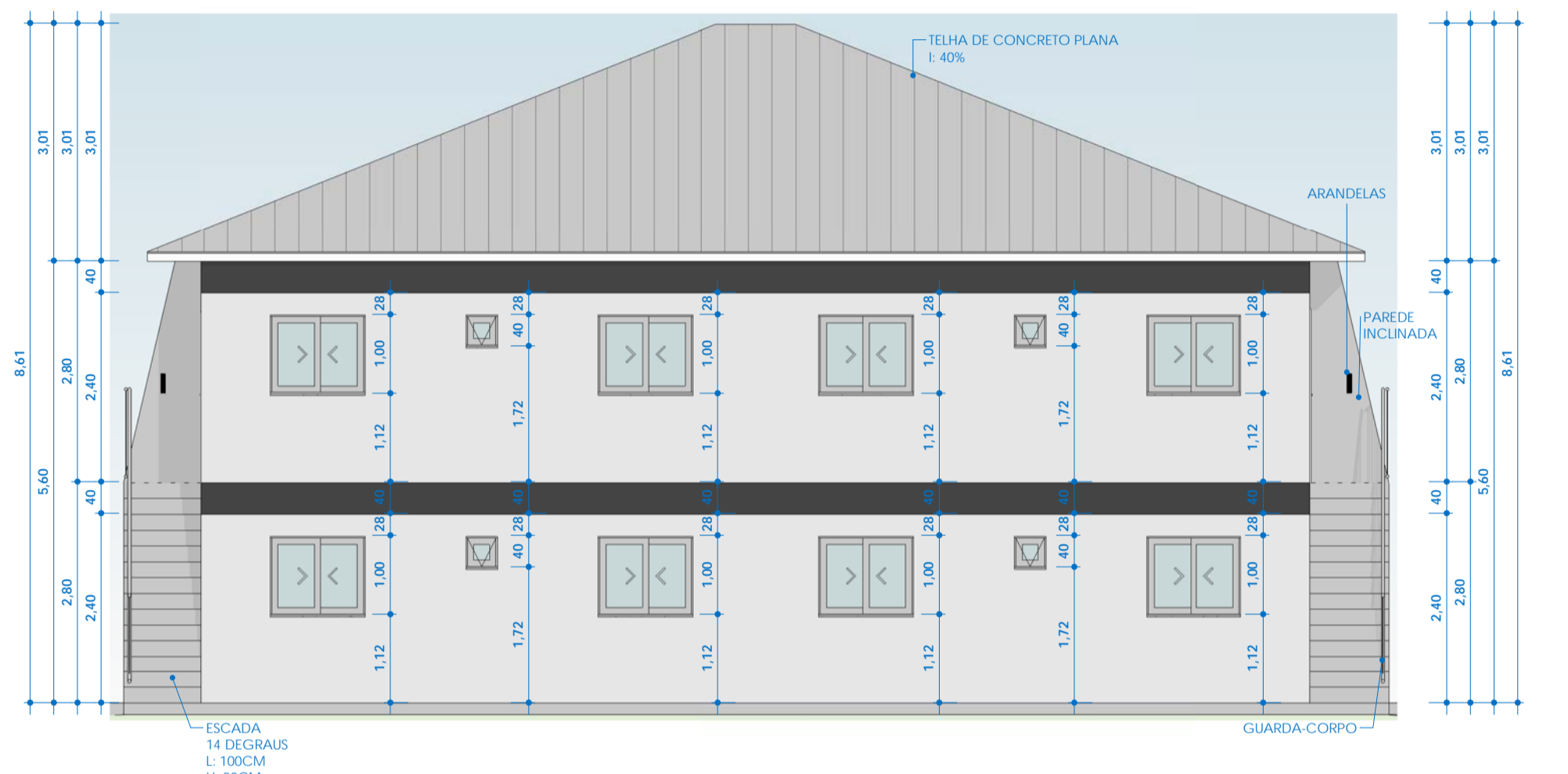
FACHADA FRONTAL
ESC:1 : 75



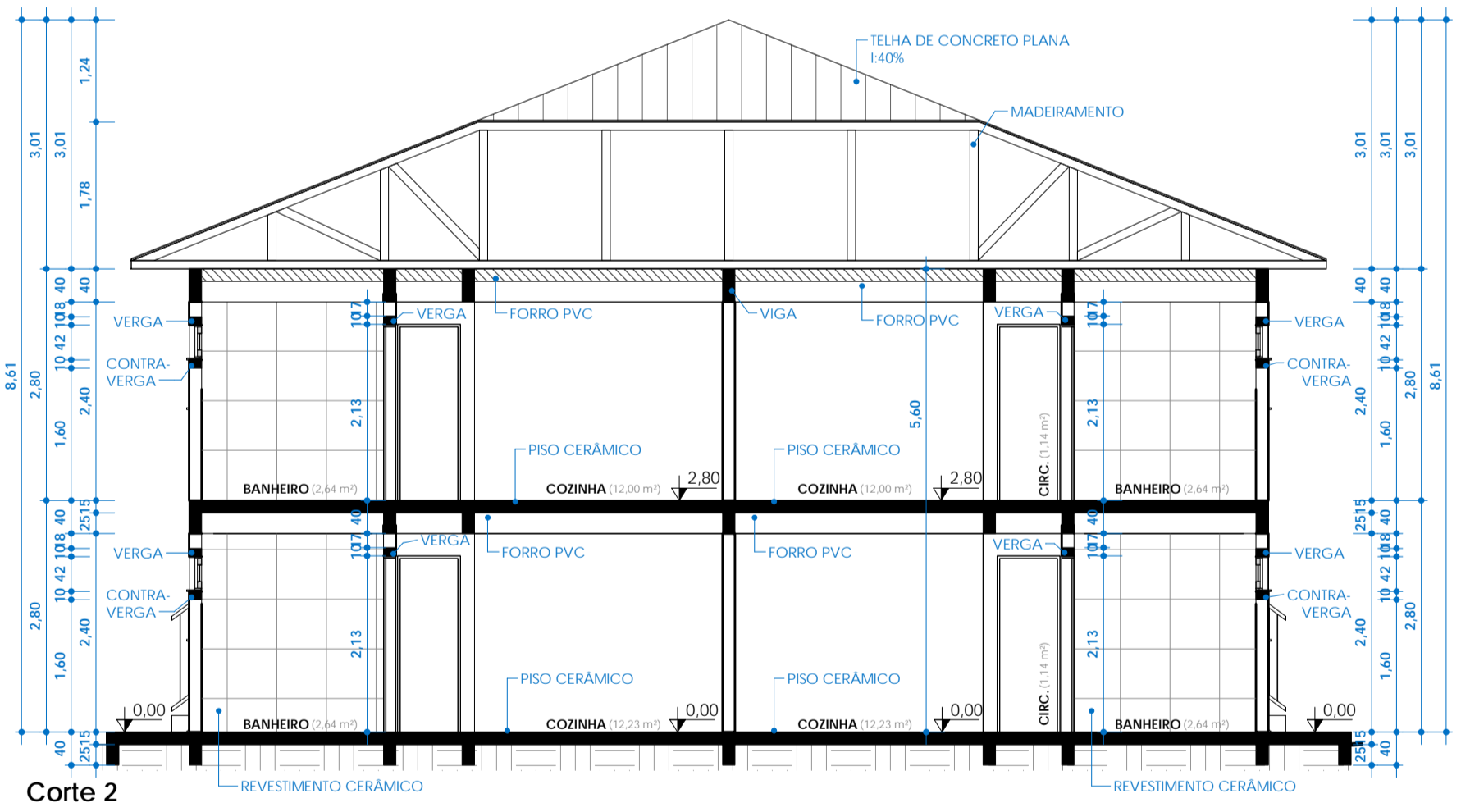
FACHADA LATERAL 1
ESC:1 : 75



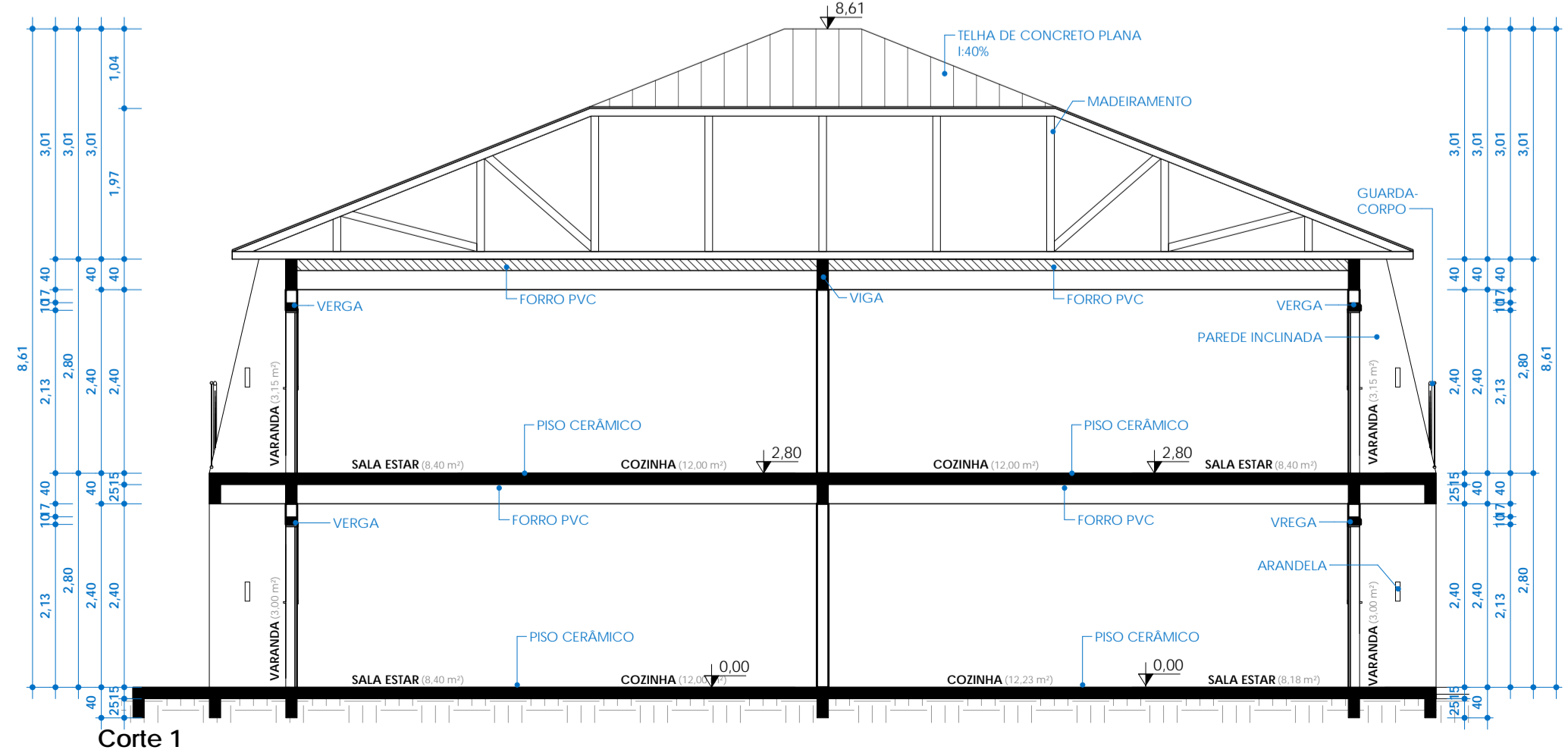
FACHADA FUNDOS
ESC:1 : 75



FACHADA LATERAL 2
ESC:1 : 75



Corte 2
ESC:1 : 75



Corte 1
ESC:1 : 75

Nome: CONJUNTO HABITACIONAL		Rua Frontal: RUA DA PALMEIRA
Responsável técnico: FRANCIS CAMPAGNOLO Engenheiro Civil - CREA/RS 236.817	Proprietário(a): BRUNO CAVALHEIRO Engenheiro Civil - CREA/RS 236.820	Lote: 03-A / QUADRA 50
Projeto/Desenhista: STEFANI MARCOTTO Arquiteta e Urbanista - CAU-RS A271310-1	Escala: INDICADA Data: JUNHO/2024	Matricula: 117.746 Zona: URBANA
Nesta planilha: CORTES, FACHADAS, PERSPECTIVAS		Local: CERRO GRANDE - RS
PREFEITURA MUNICIPAL DE CERRO GRANDE		Prancha: A102